

**Ngā Manukura o Āpōpō**



**THE PERFORMANCE OF NEW ZEALAND SCHOOLS OF NURSING**  
Responsive to Māori Nursing Students  
**2nd Edition 2014**



Ehara taku toa i te toa takitahi  
engari he toa takitini

Success is not the work of one, but the  
work of many



# CONTENTS

About Ngā Manukura o Āpōpō	6	Transition to tertiary education	9
The New Zealand Nursing Workforce	6	Attrition	9
The Māori Nursing Workforce	6	Māori student success	9
Nursing Graduates and Date of First Registration	6	Affirm Māori student identity	9
Nursing Entry to Practice	7	Promoting Māori Student Success	10
Nursing Advanced Choice of Employment (ACE)	7	New Zealand Schools of Nursing	11
Voluntary Bonding Scheme	7	How to Read the Scorecard	11
Why a Scorecard?	8	New Zealand Educational Institute Scorecards	15 - 27
Performance of the Tertiary Education System	8	Ethnicity data	28
Tertiary Education Commission	8	Glossary of terms	28
Limitations of the Data	8	TEC Indicator Definitions	28
Disclaimer	8	References	29
Literature	9		

## ABOUT NGĀ MANUKURA O ĀPŌPŌ

Ngā Manukura o Āpōpō is a national workforce development programme for Māori nurses and midwives. It has been developed in partnership with representatives from primary care providers, District Health Boards, non-governmental organisations and other national Māori nursing and midwifery organisations.

Since 2009, Ngā Manukura o Āpōpō has been developing programmes designed to:

- Increase access to Māori leadership training to support clinical leaders in Māori nursing and midwifery;
- Increase the size and skill base of the Māori nursing and midwifery workforce, and;
- Expand our knowledge about effectiveness of specific Māori health workforce development initiatives.

There are three key work streams within Ngā Manukura o Āpōpō:

1. Clinical Leadership – offering Māori nurses and midwives the opportunity to participate in Māori clinical leadership training programmes;
2. Professional Development – where the focus is on enhancing undergraduate programmes and improving access to professional development opportunities for Māori nurses and midwives;
3. Recruitment and Profile Raising – raising the profile of nursing and midwifery professions to Māori considering a career in health.

### The New Zealand nursing workforce<sup>1</sup>

At 31 March 2011 there were a total of 48,563 practising nurses on the New Zealand Nursing Register. This workforce comprised 89 Nurse Practitioners, 45,318 Registered Nurses and 3,156 Enrolled Nurses. The nursing workforce is overwhelmingly female, with only 7.4% of nurses being male. The workforce is also an ageing one, with 41% aged 50 or older. The largest single ethnic group in the New Zealand nursing workforce is New Zealand European/Pākehā, with 68% of nurses identifying with this ethnic group (either solely or in conjunction with one or two other ethnic groups). Overall, 7% of nurses identified as NZ Māori, and 4% with Pacific ethnic groups (1).

### The Māori nursing workforce

Of the 7 per cent or 2,856 Māori nurses in the workforce, over half were employed by District Health Boards (57.6%). Following this, the employment settings with the greatest number of Māori nurses were primary health organisations/community service, rest home/residential care or in a Māori health service provider. The practice areas with the largest proportion of nurses identifying as Māori were mental health, addiction services and youth health (1).

### Nursing graduates and date of first registration

Nursing graduates who successfully complete a Nursing Council of New Zealand- approved programme of study in New Zealand can, on passing the State Examination for Nurses, apply for entry to the register.

The date of first registration by registered nurse applicants provides an indication of the movement of nursing graduates into the New Zealand workforce. It should be noted that undergraduate student data sourced from the Tertiary Education Commission (TEC) may not match the graduate's date of first registration. Data supplied by the Nursing Council of New Zealand shows that despite workforce initiatives implemented over the past decade, the total number of nurses registering for the first time who identified as Māori each year has remained static (Graph 1).

1. Nursing workforce reports were published in 2000, 2002 and 2010. From 2011 the Nursing Council of New Zealand publishes reports two yearly. <http://nursingcouncil.org.nz/Publications/Reports>

## NURSING ENTRY TO PRACTICE

Nursing Entry to Practice (NETP) programmes are provided by District Health Boards (DHBs). NETP programmes are not mandatory for new graduates, however, they do provide a supportive process to enable the transition from student to a competent registered nurse.

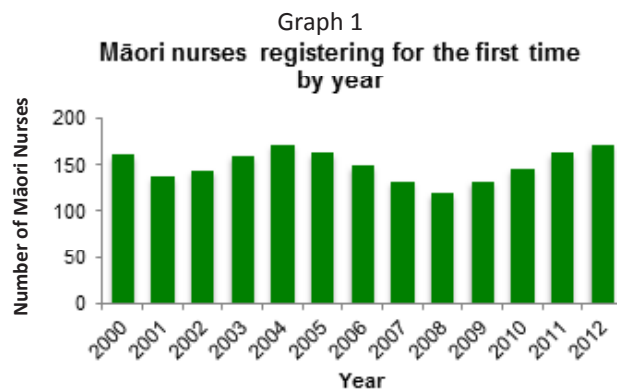
New graduate nurses employed by any DHB or health provider sub-contracted to a DHB can also access the Health Workforce New Zealand (HWNZ) funded Nursing Entry to Practice (NETP) programme. This is a supported first year of practice programme for newly-registered nurses in:

- A District Health Board;
- Mental Health and Addiction Services (in DHBs where the programme is offered);
- Aged residential care or primary care including Māori health service providers who meet programme requirements.

NETP programmes are approved by the Nursing Council and co-ordinated at a DHB-level. While the Nursing Council has a role in approving and monitoring NETP programmes and Schools of Nursing work closely with DHBs, these organisations do not have a role in determining the number of places available on NETP programmes or decisions about who is accepted onto a programme. Each District Health Board makes these decisions.

The programme currently includes a maximum of two clinical placements/rotations, clinical preceptor support for the duration, professional development (the equivalent of 12 group learning/study days), and an additional two development days (16 hours) for goal setting and assessment, peer support and cultural support. Many NETP programmes now include a postgraduate nursing course enabling new graduates to begin postgraduate study in a supportive environment.

Funding is available to provide mentoring, cultural supervision and cultural development activities to support Māori trainees to complete the HWNZ-funded training programme. Eligible trainees must have whakapapa and cultural links to whānau, hapū and iwi.



## Nursing Advanced Choice of Employment (ACE)

Health Workforce New Zealand and the Office of the Chief Nurse implemented a new system to match new graduate nurses with first year of practice jobs in 2012. The nursing ACE system enables new graduates to apply online to multiple District Health Boards using one application. If employed through ACE, nurses will, as a matter of course, enter the NETP programme". The ACE process is primarily for new graduates seeking DHB employment. Non-DHB health service providers, such as primary health care practices may also advertise for new graduates and should be applied for outside of the ACE process.

## Voluntary Bonding Scheme

The Voluntary Bonding Scheme (VBS) is an incentive-based payment scheme to reward nursing graduates who agree to work in hard-to-staff specialties and/or communities. In order to receive payment, graduates must register their interest, be confirmed and stay on the scheme for a minimum of three years and a maximum of five years. The scheme is voluntary and individuals can withdraw at any time.

The scheme pays nurses, who are eligible, \$2,833 annually (after tax), for up to five years. If the nurse has a student loan, the money will go towards paying it back; if not, the payment goes to the nurse. For more information on the scheme, please refer to the Ministry of Health website.





## WHY A SCORECARD?

‘Every system is perfectly designed to achieve the outcomes that it gets’.<sup>III</sup>

W. Edwards Deming

Improvement in Māori undergraduate nursing students’ education outcomes is critical to increasing the size and capability of the Māori nursing workforce. The Responsiveness to Māori Nursing Students Scorecard (the Scorecard) was originally published in 2012 using data collected from the 2010 reporting year. It provided a system-level picture of the responsiveness of schools of nursing to Māori undergraduate students using existing datasets. This 2nd edition builds on the previous methodology and includes information collated from Schools of Nursing on strategies and support in place to support achievement from 2011 data.

Publishing the Scorecard is a means of promoting and monitoring performance and the achievement of tertiary education providers. The information will also be shared with whānau and potential students so they are well-informed about each provider’s performance outcomes as part of their selection process.

## Performance of the Tertiary Education System

Raising achievement for Māori learners is part of the Tertiary Education Strategy 2010 – 2015. The strategy describes the need for tertiary education providers to focus on improving their pastoral and academic support and the learning environment to support Māori learners, and adopt teaching practices that are culturally responsive to Māori students.

In 2009, the Tertiary Education Commission (TEC) introduced reports that present educational performance indicators for each of the tertiary education organisations<sup>IV</sup>. Ngā Manukura o Āpōpō has adapted these reports into a ‘scorecard’ format where performance can be understood at a glance.

## Tertiary Education Commission

The data presented in this Scorecard are generated from data submitted to TEC by Tertiary Education Organisations (TEO’s) for the 2011 reporting year. The data is sourced primarily from the Single Data Return form submitted by providers as at March 2012. This means that the data used aligns with the 2011 performance information published by the TEC. TEO’s complete a Single Data Return for administrative purposes and funding. Only in recent years has TEC used the data for the purpose of education performance indicators. More information about how this data is used to calculate the indicators can be found on the TEC’s website<sup>V</sup>.

## Limitations of the Data

Limitations that need to be considered when reading the information presented in this document include:

- Data quality: It was not possible to explore any questions that arise from the data quality, and anomalies may be evident. To this end, the TEC cannot guarantee its appropriateness for any other purpose that what it was collected for. Data integrity is also questionable as there may be some errors on forms submitted by TEOs. It is also difficult to attest to data accuracy with students moving between full-time and part-time study;
- Privacy of information: There may be issues regarding releasing data at nursing school level as it may breach the Privacy Act 1993 because the student numbers may be small in some cases and, therefore, be potentially identifiable;
- Ethnicity data: There is potential for Māori ethnicity data to be understated, as it is known some students may not identify as Māori on enrolment;
- Small numbers: The data is unlikely to provide statistically significant results, particularly in schools of nursing with low numbers. It should be noted that for schools of nursing with 50 or less students, the use of percentages can over-represent their status;
- Timing of qualification completion: Where schools have introduced new qualifications in preceding years, and not yet produced graduates from these programmes, the percentage of qualification completion may be understated.

## Disclaimer

While efforts have been made to verify the information, the TEC does not attest to the accuracy or completeness of the results. Each TEO is responsible for the integrity of data collected from students and staff. The responsibility for checking the integrity of the data provided to the TEC rests with the TEO.

III. <http://www.minedu.govt.nz/NZEducation/EducationPolicies/TertiaryEducation/PolicyAndStrategy/TertiaryEducationStrategy.aspx>

IV. <http://publications.tec.govt.nz/Performance+of+Tertiary+Education+Sector++At+a+Glance>

V. <http://www.tec.govt.nz/Tertiary-Sector/Performance-information/Educational-performance/>



# THE PERFORMANCE OF NURSING EDUCATION PROVIDERS

## Responsive to Māori Nursing Students

### LITERATURE

#### Policy context

The origins of government policy for increasing the number of Māori in the health workforce extends back to the leadership of Maui Pomare and Te Rangi Hīroa (both of Ngāti Mutunga descent), New Zealand's first Māori medical practitioners, health administrators and politicians. The merits of Māori nurses caring for their own people was promoted as early as 1897 and articulated in government policy by Maui Pomare in 1908 when he stated 'these nurses were intended to go forth to care for the sick, to lecture, and to uplift humanity'<sup>VI</sup>.

Treaty of Waitangi principles have been incorporated into various pieces of legislation, including the Education Act 1989, where the Government's long-term strategic direction for tertiary education must address the development aspirations of Māori (s159AA); and the New Zealand Public Health & Disability Act 2000 provides mechanisms for Māori to contribute to decision-making on, and to participate in the delivery of, health and disability services (s4).

Equity funding is a government contribution to improving equity of access and achievement for Māori students. The purpose of Equity funding is to provide additional support to improve participation, retention, completion and progression of Māori learners. Government expectations about the type of support offered are set out in Ka Hikitia - Managing for Success<sup>II</sup>. Practical information for improving learner success can be found at Ako Aotearoa's Resource Centre ([ako.aotearoa.ac.nz](http://ako.aotearoa.ac.nz))<sup>VII</sup>.

Both the Human Rights Act (1993) and the New Zealand Bill of Rights Act (1990) recognise that, to overcome discrimination, positive actions may be needed to enable particular groups to achieve equal outcomes with other groups in our society. These positive actions are called 'special measures' or 'affirmative action'. They are not discriminatory if they assist people in certain groups to achieve equality. Any special measure must be based on information that shows that the present position is unequal (3).

#### Transition to tertiary education

Evidence from across the world is categorical that first-year retention is the key to degree completion (4-6). Intensive support to establish academic skills is essential. First-generation Māori tertiary students face challenges, as they adapt to the institutional environment, including discrimination and alienation within the culture of the institution (7,8).

Academic staff need an understanding of Māori student and socio-political realities and challenges. This means recognising that not all students are equal or have access to equal opportunities. Therefore, approaching each student and their specific circumstances is crucial (7).

#### Attrition

Student attrition is associated with a range of factors, including financial hardship, staff and peer insensitivity to cultural issues, lack of same ethnicity mentors, fewer resources, lack of educational preparation and study skills, limited whānau experience in tertiary education and ongoing family obligations (7,9-11).

Tinto, Rosso, Kadel (1994) and Tierney (1999) found that factors affecting attrition included lack of academic and social engagement, institutions' failure to provide an engaging environment, institutions' covert exclusivity, limited opportunities for participation beyond the fringes for groups not traditionally well-represented in tertiary study and a lack of reciprocity as a mechanism for creating engagement (12,13).

#### Limitations of the Data

Student attrition is associated with a range of factors, including financial hardship, staff and peer insensitivity to cultural issues, lack of same ethnicity mentors, fewer resources, lack of educational preparation and study skills, limited whānau

experience in tertiary education and ongoing family obligations (7,9-11).

Tinto, Rosso, Kadel (1994) and Tierney (1999) found that factors affecting attrition included lack of academic and social engagement, institutions' failure to provide an engaging environment, institutions' covert exclusivity, limited opportunities for participation beyond the fringes for groups not traditionally well-represented in tertiary study and a lack of reciprocity as a mechanism for creating engagement (12,13).

#### Māori student success

Central to Māori student success is the teaching and learning involved (14). Literature shows that teaching and learning factors can both help and hinder student success and that Māori student success can be facilitated through key teaching and learning factors particularly within the non-lecture context (15,16).

Ako is a concept that acknowledges that students and teachers share the power base of teaching and learning (17). Ako is grounded in the principle of reciprocity and shared through the development of tuakana – teina models, peer mentoring, and the concept of awhi mai – awhi atu.

#### Affirm Māori student identity

Māori learners are more likely to engage with a programme when they feel connected to it, and it is culturally relevant to them (18). Programmes should facilitate clinical practice experiences in Māori health settings that validate the students' worldview, and prepares them to work effectively within Māori communities. Programmes should facilitate access to Māori registered nurses as role models and mento.

VI. <http://news.tangatawhenua.com/archives/911>  
VII. <http://ako.aotearoa.ac.nz/topics/term/18>

## PROMOTING MĀORI STUDENT SUCCESS

Māori Tertiary Success	Best practice recommendations (7, 11, 19-23)	
<p><b>Positive first semester experiences that enhance engagement and retention:</b></p> <p><i>Early academic and social engagement into the tertiary environment is pro active, culturally appropriate and viewed as a normal part of learning to ensure retention and success in the programme.</i></p>	<ul style="list-style-type: none"> <li>• Embed whanaungatanga - an acknowledgement of Māori student identity and values within the educational environment;</li> <li>• Integrate and embed support for Māori nursing students within the delivery of the core curriculum;</li> <li>• Provide Māori nursing mentorship and support within academic and practice environment, preferably with Māori registered nurses;</li> <li>• Provide tutorials and learning communities for Māori students;</li> <li>• Māori students are socially and academically connected to support through regular interactions with academic staff, role models and peers.</li> </ul>	<ul style="list-style-type: none"> <li>• Establish early warning systems and processes to identify and support Māori nursing students at risk.</li> <li>• Provide early counselling options, and flexibility to support Māori students considering leaving.</li> <li>• Provide, encourage and monitor scholarship uptake.</li> <li>• Provide early financial advice/strategies to support management of financial barriers.</li> </ul>
<p><b>Academic Responsiveness:</b></p> <p><i>Responsiveness to Māori nursing students from the academic team is critical to improving responsiveness and success.</i></p>	<ul style="list-style-type: none"> <li>• Provide a learning environment that integrates and endorses Māori values;</li> <li>• Ensure staff have a critical analysis of the historical and contemporary experiences of Māori informed by the concepts of equity, social justice and human rights;</li> <li>• Ensure academic staff are competent and supported in best practice in teaching and delivery for (a) Māori, and (b) content related to Māori health and wellbeing;</li> <li>• Incorporate teaching practices that are culturally responsive to Māori students' needs.</li> </ul>	<ul style="list-style-type: none"> <li>• Provide Māori students frequent and in-depth constructive feedback from academic staff.</li> <li>• Recognise the importance of holistic wellbeing, and the proactive provision of culturally-appropriate pastoral care;</li> <li>• Access to Māori health literature is available through physical and online libraries.</li> <li>• Encourage links between departments and Māori communities/Māori health providers.</li> <li>• Support curriculum review to better incorporate Māori values and content.</li> </ul>
<p><b>Clinical Responsiveness:</b></p> <p><i>Practice experiences will support Māori student's cultural and clinical development in order for them to work effectively with Māori whānau and communities</i></p>	<ul style="list-style-type: none"> <li>• Utilise models of best practice for preceptorship with Māori students;</li> <li>• Recognise and legitimise competent student performance of whanaungatanga, mihimihi, karakia, and other Māori cultural practices as appropriate for practising with Māori clients in clinical practice;</li> <li>• Provide cultural training of staff who undertake supervisory responsibility/activities for Māori nursing students;</li> <li>• Have processes that allow students to report and comment on the effectiveness of their supervisors in a confidential manner.</li> </ul>	<ul style="list-style-type: none"> <li>• Provide advice to Māori students about clinical placement options and support students' aspirations for employment (i.e. working with Māori communities);</li> <li>• Have processes to gather student feedback about clinical placements, and responding to any related issues where relevant;</li> <li>• Have processes to moderate the transfer of information for clinical placements, including assessments and evaluation requirements for Māori students.</li> </ul>

# THE PERFORMANCE OF NURSING EDUCATION PROVIDERS

Responsive to Māori Nursing Students

## NEW ZEALAND SCHOOLS OF NURSING

EFTS by School	% EFTS	Māori	Non-Māori	Total
1 NorthTec	30	▲ 63	144	207
2 AUT University	7	▼ 40	564	604
3 University of Auckland	4	▼ 9	203	212
4 UNITEC	6	▲ 18	292	310
5 Manukau Institute of Technology	8	▼ 41	483	524
6 Waikato Institute of Technology	15	▲ 79	442	521
7 Waiariki Institute of Technology	31	▲ 135	296	431
8 Western Institute of Technology at Taranaki	16	≈ 18	98	116
9 Massey University	7	≈ 24	343	367
10 UCOL	14	▲ 68	404	472
11 Eastern Institute of Technology	30	▲ 105	245	350
12 Whitireia Community Polytechnic	19	▼ 67	295	362
13 Nelson Marlborough Institute of Technology	12	▲ 16	123	139
14 Christchurch Polytechnic Institute of Technology	8	▲ 49	546	595
15 Otago Polytechnic	7	≈ 22	288	310
16 Southern Institute of Technology	11	▼ 23	195	218

There are 16 tertiary providers delivering nursing programmes from 21 sites in Aotearoa with a number of schools of nursing providing programmes from regional or satellite sites. The data provided reflects total school enrolments that aggregates Years 1, 2 and 3 for 2011.

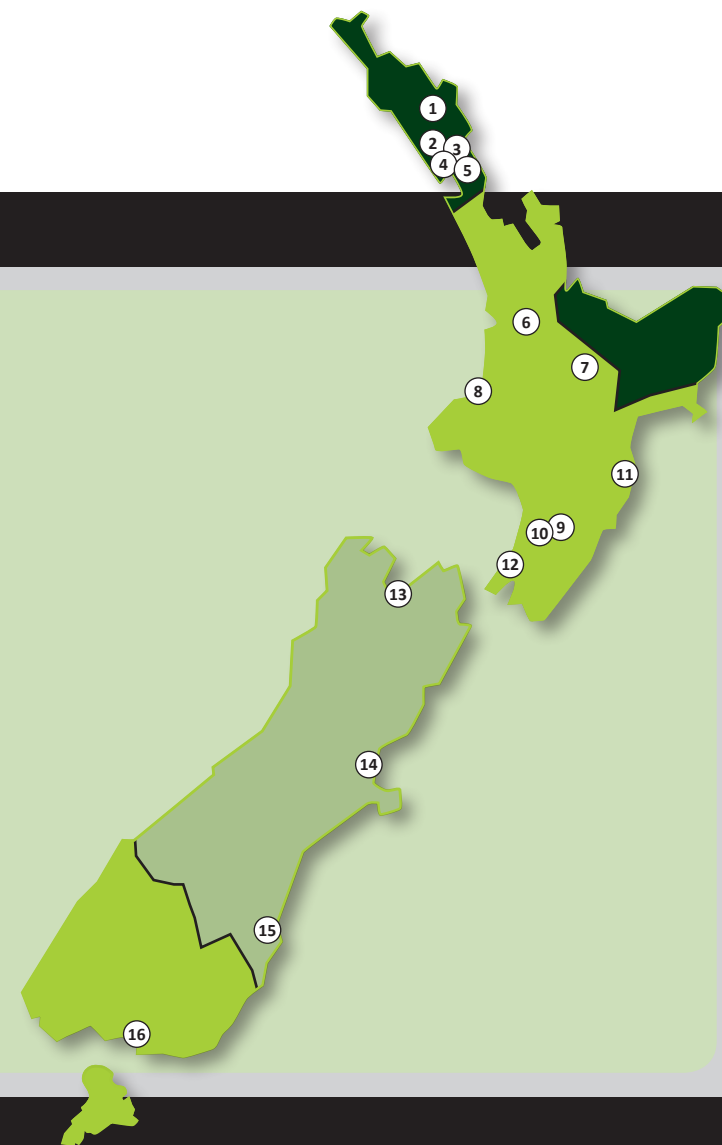
Māori population per region

10% or less

10.1 – 15%

15.1 – 20%

20.1% and over



## HOW TO READ THE SCORECARD

The four indicators selected to measure nursing school performance are:

1. Māori student participation (EFTS 'equivalent full-time student');
2. Successful course completion;
3. Student retention, and;
4. Successful qualification completion.

Achievement for each School of Nursing is expressed in percentages (%) for each indicator. The indicators describe performance at an aggregated level for each school, not by different years, campuses or sites under each school. Performance of each school by indicator is included in each table. A brief overview of the tertiary provider, the nursing qualifications they offer and the support services provided to Māori

students is presented at the bottom of each page.

The data presented is generated from data submitted to TEC by Tertiary Education Organisations (TEOs) for the 2011 reporting year. This version of the Scorecard has not applied a ranking system. Instead data published in the 1st edition of the Scorecard, based on the 2010 reporting year is included for comparison.

Note: Due to the inclusion of additional EFTS carried over from proceeding years and counted in this time period, the completion of qualification may be over 100 per cent.



## EFTS in Bachelor Degree

This measure shows the percentage of Māori student EFTS in Bachelor Degree nursing programmes.

**2010 2011**  
**30% 30%**



## Successful Completion of Courses

This measure shows the proportion of courses in a given year that are successfully completed by Māori students.

**2010 2011**  
**89% 94%**



## Students Retained in Study

This measure shows the proportion of Māori students in a given year who complete a qualification or re-enrol at the same tertiary education organisation the following year.

**2010 2011**  
**85% 90%**



## Completion of Qualification

This measure shows the proportion of Māori students in a given year who complete a qualification.

**2010 2011**  
**75% 48%**

Waiariki Institute of Technology	31%
Eastern Institute of Technology	30%
<b>Northland Polytechnic</b>	<b>30%</b>
Whitireia Community Polytechnic	19%
Western Institute of Technology at Taranaki	16%
Waikato Institute of Technology	15%
UCOL Universal College of Learning	14%
Nelson Marlborough Institute of Technology	12%
Southern Institute of Technology	11%
Christchurch Polytechnic Institute of Technology	8%
Manukau Institute of Technology	8%
AUT University	7%
Massey University	7%
Otago Polytechnic	7%
UNITEC New Zealand	6%
The University of Auckland	4%

<b>Northland Polytechnic</b>	<b>94%</b>
Christchurch Polytechnic Institute of Technology	94%
Otago Polytechnic	94%
Massey University	93%
Waiariki Institute of Technology	92%
Nelson Marlborough Institute of Technology	90%
Western Institute of Technology at Taranaki	89%
The University of Auckland	89%
Waikato Institute of Technology	87%
UCOL Universal College of Learning	87%
Eastern Institute of Technology	86%
AUT University	86%
Southern Institute of Technology	83%
Whitireia Community Polytechnic	81%
Manukau Institute of Technology	81%
UNITEC New Zealand	76%

Eastern Institute of Technology	96%
Manukau Institute of Technology	92%
<b>Northland Polytechnic</b>	<b>90%</b>
Waiariki Institute of Technology	87%
The University of Auckland	87%
Otago Polytechnic	86%
AUT University	85%
Waikato Institute of Technology	80%
Nelson Marlborough Institute of Technology	80%
Southern Institute of Technology	79%
Massey University	77%
Whitireia Community Polytechnic	74%
UNITEC New Zealand	71%
Christchurch Polytechnic Institute of Technology	70%
UCOL Universal College of Learning	65%
Western Institute of Technology at Taranaki	63%

Southern Institute of Technology	128%
Nelson Marlborough Institute of Technology	110%
Otago Polytechnic	108%
UCOL Universal College of Learning	81%
AUT University	68%
Waikato Institute of Technology	60%
Christchurch Polytechnic Institute of Technology	60%
Manukau Institute of Technology	59%
Eastern Institute of Technology	57%
Waiariki Institute of Technology	56%
UNITEC New Zealand	51%
<b>Northland Polytechnic</b>	<b>48%</b>
Western Institute of Technology at Taranaki	33%
The University of Auckland	33%
Whitireia Community Polytechnic	23%
Massey University	13%

### NORTHLAND POLYTECHNIC (North Tec)

Northland Polytechnic recognises that many students have to juggle jobs and families and overcome their fear of returning to formal education in order to study. They have structured their courses to attract people with real life experience and maturity into nursing. North Tec offers the support students need along the way, as well as small classes and a flexible learning environment.

#### Support for Māori students

The Māori and Pasifika Student Advisor service is dedicated

to supporting students of Māori descent who need general or financial support while studying at NorthTec. Kaiako, Kaumatua, Kai Takawaenga and the nursing team work collaboratively to support students. The programme blends e-learning modules with classroom teaching, allowing nursing students to study off-campus. A Māori nursing student support group and access to Māori registered nurses and lecturers are provided within NorthTec. Bachelor of Nursing programme students are encouraged and supported to attend national student hui.

### Qualifications offered

#### Bachelor of Nursing

Nursing Department, Private Bag 9010, Whangarei 0148

Information about this tertiary provider, qualifications offered and support for Māori students can be found on the website:

[www.northland.ac.nz](http://www.northland.ac.nz)



## EFTS in Bachelor Degree

This measure shows the percentage of Māori student EFTS in Bachelor Degree nursing programmes.

**2010 2011**  
**9% 7%**

Waiariki Institute of Technology	31%
Eastern Institute of Technology	30%
Northland Polytechnic	30%
Whitireia Community Polytechnic	19%
Western Institute of Technology at Taranaki	16%
Waikato Institute of Technology	15%
UCOL Universal College of Learning	14%
Nelson Marlborough Institute of Technology	12%
Southern Institute of Technology	11%
Christchurch Polytechnic Institute of Technology	8%
Manukau Institute of Technology	8%
<b>AUT University</b>	<b>7%</b>
Massey University	7%
Otago Polytechnic	7%
UNITEC New Zealand	6%
The University of Auckland	4%



## Successful Completion of Courses

This measure shows the proportion of courses in a given year that are successfully completed by Māori students.

**2010 2011**  
**64% 86%**

Northland Polytechnic	94%
Christchurch Polytechnic Institute of Technology	94%
Otago Polytechnic	94%
Massey University	93%
Waiariki Institute of Technology	92%
Nelson Marlborough Institute of Technology	90%
Western Institute of Technology at Taranaki	89%
The University of Auckland	89%
Waikato Institute of Technology	87%
UCOL Universal College of Learning	87%
Eastern Institute of Technology	86%
<b>AUT University</b>	<b>86%</b>
Southern Institute of Technology	83%
Whitireia Community Polytechnic	81%
Manukau Institute of Technology	81%
UNITEC New Zealand	76%



## Students Retained in Study

This measure shows the proportion of Māori students in a given year who complete a qualification or re-enrol at the same tertiary education organisation the following year.

**2010 2011**  
**83% 85%**

Eastern Institute of Technology	96%
Manukau Institute of Technology	92%
Northland Polytechnic	90%
Waiariki Institute of Technology	87%
The University of Auckland	87%
Otago Polytechnic	86%
<b>AUT University</b>	<b>85%</b>
Waikato Institute of Technology	80%
Nelson Marlborough Institute of Technology	80%
Southern Institute of Technology	79%
Massey University	77%
Whitireia Community Polytechnic	74%
UNITEC New Zealand	71%
Christchurch Polytechnic Institute of Technology	70%
UCOL Universal College of Learning	65%
Western Institute of Technology at Taranaki	63%



## Completion of Qualification

This measure shows the proportion of Māori students in a given year who complete a qualification.

**2010 2011**  
**61% 68%**

Southern Institute of Technology	128%
Nelson Marlborough Institute of Technology	110%
Otago Polytechnic	108%
UCOL Universal College of Learning	81%
<b>AUT University</b>	<b>68%</b>
Waikato Institute of Technology	60%
Christchurch Polytechnic Institute of Technology	60%
Manukau Institute of Technology	59%
Eastern Institute of Technology	57%
Waiariki Institute of Technology	56%
UNITEC New Zealand	51%
Northland Polytechnic	48%
Western Institute of Technology at Taranaki	33%
The University of Auckland	33%
Whitireia Community Polytechnic	23%
Massey University	13%

### AUT UNIVERSITY

AUT University's nursing courses are continually evolving in line with the latest research and needs of the health care sector. AUT University has strong links to district health boards, primary healthcare organisations, non-government organisations, private practices and volunteer groups in the community and acute settings. This means their students gain extensive clinical learning in a variety of health care settings. Class learning involves interactive teaching and learning facilitated by experienced nurses. A whānau room enables Māori students to come together for shared learning and experiences.

### Support for Māori students

AUT's student learning centre offers a range of services, resources and information for Māori students, along with the support of Māori learning advisors. The tuakana-teina model enables Māori students to access peer support. AUT University's School of Health Care Practice also provide a dedicated Māori nurse lecturer to support Māori nursing students. Counselling services offer a Māori counsellor to support students and their health and wellbeing. Māori students are encouraged and supported to attend the annual national student hui.

### Qualifications offered

**Bachelor of Health Science (Nursing)**  
**School of Nursing, Private Bag 92-006, Auckland 1142**

Information about this tertiary provider, qualifications offered and support for Māori students can be found on the website:  
[www.aut.nz](http://www.aut.nz)



# UNIVERSITY OF AUCKLAND



## EFTS in Bachelor Degree

This measure shows the percentage of Māori student EFTS in Bachelor Degree nursing programmes.

**2010 2011**  
**6% 4%**



## Successful Completion of Courses

This measure shows the proportion of courses in a given year that are successfully completed by Māori students.

**2010 2011**  
**86% 89%**



## Students Retained in Study

This measure shows the proportion of Māori students in a given year who complete a qualification or re-enrol at the same tertiary education organisation the following year.

**2010 2011**  
**100% 87%**



## Completion of Qualification

This measure shows the proportion of Māori students in a given year who complete a qualification.

**2010 2011**  
**124% 33%**

Waiariki Institute of Technology	31%
Eastern Institute of Technology	30%
Northland Polytechnic	30%
Whitireia Community Polytechnic	19%
Western Institute of Technology at Taranaki	16%
Waikato Institute of Technology	15%
UCOL Universal College of Learning	14%
Nelson Marlborough Institute of Technology	12%
Southern Institute of Technology	11%
Christchurch Polytechnic Institute of Technology	8%
Manukau Institute of Technology	8%
AUT University	7%
Massey University	7%
Otago Polytechnic	7%
UNITEC New Zealand	6%
The University of Auckland	4%

Northland Polytechnic	94%
Christchurch Polytechnic Institute of Technology	94%
Otago Polytechnic	94%
Massey University	93%
Waiariki Institute of Technology	92%
Nelson Marlborough Institute of Technology	90%
Western Institute of Technology at Taranaki	89%
The University of Auckland	89%
Waikato Institute of Technology	87%
UCOL Universal College of Learning	87%
Eastern Institute of Technology	86%
AUT University	86%
Southern Institute of Technology	83%
Whitireia Community Polytechnic	81%
Manukau Institute of Technology	81%
UNITEC New Zealand	76%

Eastern Institute of Technology	96%
Manukau Institute of Technology	92%
Northland Polytechnic	90%
Waiariki Institute of Technology	87%
The University of Auckland	87%
Otago Polytechnic	86%
AUT University	85%
Waikato Institute of Technology	80%
Nelson Marlborough Institute of Technology	80%
Southern Institute of Technology	79%
Massey University	77%
Whitireia Community Polytechnic	74%
UNITEC New Zealand	71%
Christchurch Polytechnic Institute of Technology	70%
UCOL Universal College of Learning	65%
Western Institute of Technology at Taranaki	63%

Southern Institute of Technology	128%
Nelson Marlborough Institute of Technology	110%
Otago Polytechnic	108%
UCOL Universal College of Learning	81%
AUT University	68%
Waikato Institute of Technology	60%
Christchurch Polytechnic Institute of Technology	60%
Manukau Institute of Technology	59%
Eastern Institute of Technology	57%
Waiariki Institute of Technology	56%
UNITEC New Zealand	51%
Northland Polytechnic	48%
Western Institute of Technology at Taranaki	33%
The University of Auckland	33%
Whitireia Community Polytechnic	23%
Massey University	13%

### THE UNIVERSITY OF AUCKLAND

The School of Nursing at The University of Auckland is guided by three strategic positions: creating future leaders in nursing and the health sector; linking their teaching with research centres and programmes; and teaching programmes characterised by clinical excellence. Established in 1999, today they now aim to be the 'school of choice' with respect to specialised nursing programmes.

### Support for Māori students

The Māori Equity Adviser's ensure Māori students receive support with enrolment, orientation, course planning, scholarship and grant information. Te Puna Wananga is the Māori arm of the Student Learning Centre providing individual assistance for Māori students. MAPAS (Māori and Pacific Admission Scheme) is available to applicants with Māori or Pacific whakapapa and provides both admission into and support while studying.

### Qualifications offered

#### Bachelor of Nursing

School of Nursing, Faculty of Medical Health and Sciences,  
Private Bag 92019, Auckland

Information about this tertiary provider, qualifications offered and support for Māori students can be found on the website:

[www.auckland.ac.nz](http://www.auckland.ac.nz)



## EFTS in Bachelor Degree

This measure shows the percentage of Māori student EFTS in Bachelor Degree nursing programmes.

**2010** 4% **2011** 6%

Waiariki Institute of Technology	31%
Eastern Institute of Technology	30%
Northland Polytechnic	30%
Whitireia Community Polytechnic	19%
Western Institute of Technology at Taranaki	16%
Waikato Institute of Technology	15%
UCOL Universal College of Learning	14%
Nelson Marlborough Institute of Technology	12%
Southern Institute of Technology	11%
Christchurch Polytechnic Institute of Technology	8%
Manukau Institute of Technology	8%
AUT University	7%
Massey University	7%
Otago Polytechnic	7%
<b>UNITEC New Zealand</b>	<b>6%</b>
The University of Auckland	4%



## Successful Completion of Courses

This measure shows the proportion of courses in a given year that are successfully completed by Māori students.

**2010** 72% **2011** 76%

Northland Polytechnic	94%
Christchurch Polytechnic Institute of Technology	94%
Otago Polytechnic	94%
Massey University	93%
Waiariki Institute of Technology	92%
Nelson Marlborough Institute of Technology	90%
Western Institute of Technology at Taranaki	89%
The University of Auckland	89%
Waikato Institute of Technology	87%
UCOL Universal College of Learning	87%
Eastern Institute of Technology	86%
AUT University	86%
Southern Institute of Technology	83%
Whitireia Community Polytechnic	81%
Manukau Institute of Technology	81%
<b>UNITEC New Zealand</b>	<b>76%</b>



## Students Retained in Study

This measure shows the proportion of Māori students in a given year who complete a qualification or re-enrol at the same tertiary education organisation the following year.

**2010** 67% **2011** 71%

Eastern Institute of Technology	96%
Manukau Institute of Technology	92%
Northland Polytechnic	90%
Waiariki Institute of Technology	87%
The University of Auckland	87%
Otago Polytechnic	86%
AUT University	85%
Waikato Institute of Technology	80%
Nelson Marlborough Institute of Technology	80%
Southern Institute of Technology	79%
Massey University	77%
Whitireia Community Polytechnic	74%
<b>UNITEC New Zealand</b>	<b>71%</b>
Christchurch Polytechnic Institute of Technology	70%
UCOL Universal College of Learning	65%
Western Institute of Technology at Taranaki	63%



## Completion of Qualification

This measure shows the proportion of Māori students in a given year who complete a qualification.

**2010** 22% **2011** 51%

Southern Institute of Technology	128%
Nelson Marlborough Institute of Technology	110%
Otago Polytechnic	108%
UCOL Universal College of Learning	81%
AUT University	68%
Waikato Institute of Technology	60%
Christchurch Polytechnic Institute of Technology	60%
Manukau Institute of Technology	59%
Eastern Institute of Technology	57%
Waiariki Institute of Technology	56%
<b>UNITEC New Zealand</b>	<b>51%</b>
Northland Polytechnic	48%
Western Institute of Technology at Taranaki	33%
The University of Auckland	33%
Whitireia Community Polytechnic	23%
Massey University	13%

### UNITEC NEW ZEALAND

Unitec is the main nursing educator in West Auckland. At Unitec, clinical placements are a key part of the nursing programmes and include North Shore and Waitakere Hospitals, the Mason Clinic, Rehab Plus, private surgical hospitals and primary health care organisations. Students also spend time at the Education and Practice Simulation Centre at Waitakere Hospital – a high-tech, simulated hospital environment, close to the real world of nursing practice.

### Support for Māori students

The Maia Māori Development Centre is a 'one-stop' support centre for Māori students. The centre promotes and maintains an awareness of Unitec's programmes in the Māori community and provides a number of support services for Māori students and staff alike. Access to Māori Registered Nurses and Lecturers are provided within the programme. Students are encouraged and supported to attend national student hui.

### Qualifications offered

#### Bachelor of Health Science (Nursing)

Department of Nursing, Faculty of Health and Social Sciences  
Private Bag 92 025, Auckland

Information about this tertiary provider, qualifications offered and support for Māori students can be found on the website:

[www.unitec.ac.nz](http://www.unitec.ac.nz)



# MANUKAU INSTITUTE OF TECHNOLOGY



## EFTS in Bachelor Degree

This measure shows the percentage of Māori student EFTS in Bachelor Degree nursing programmes.

2010 2011  
11% 8%



## Successful Completion of Courses

This measure shows the proportion of courses in a given year that are successfully completed by Māori students.

2010 2011  
84% 81%



## Students Retained in Study

This measure shows the proportion of Māori students in a given year who complete a qualification or re-enrol at the same tertiary education organisation the following year.

2010 2011  
87% 92%



## Completion of Qualification

This measure shows the proportion of Māori students in a given year who complete a qualification.

2010 2011  
83% 59%\*

Waiariki Institute of Technology	31%
Eastern Institute of Technology	30%
Northland Polytechnic	30%
Whitireia Community Polytechnic	19%
Western Institute of Technology at Taranaki	16%
Waikato Institute of Technology	15%
UCOL Universal College of Learning	14%
Nelson Marlborough Institute of Technology	12%
Southern Institute of Technology	11%
Christchurch Polytechnic Institute of Technology	8%
<b>Manukau Institute of Technology</b>	<b>8%</b>
AUT University	7%
Massey University	7%
Otago Polytechnic	7%
UNITEC New Zealand	6%
The University of Auckland	4%

Northland Polytechnic	94%
Christchurch Polytechnic Institute of Technology	94%
Otago Polytechnic	94%
Massey University	93%
Waiariki Institute of Technology	92%
Nelson Marlborough Institute of Technology	90%
Western Institute of Technology at Taranaki	89%
The University of Auckland	89%
Waikato Institute of Technology	87%
UCOL Universal College of Learning	87%
Eastern Institute of Technology	86%
AUT University	86%
Southern Institute of Technology	83%
Whitireia Community Polytechnic	81%
<b>Manukau Institute of Technology</b>	<b>81%</b>
UNITEC New Zealand	76%

Eastern Institute of Technology	96%
<b>Manukau Institute of Technology</b>	<b>92%</b>
Northland Polytechnic	90%
Waiariki Institute of Technology	87%
The University of Auckland	87%
Otago Polytechnic	86%
AUT University	85%
Waikato Institute of Technology	80%
Nelson Marlborough Institute of Technology	80%
Southern Institute of Technology	79%
Massey University	77%
Whitireia Community Polytechnic	74%
UNITEC New Zealand	71%
Christchurch Polytechnic Institute of Technology	70%
UCOL Universal College of Learning	65%
Western Institute of Technology at Taranaki	63%

Southern Institute of Technology	128%
Nelson Marlborough Institute of Technology	110%
Otago Polytechnic	108%
UCOL Universal College of Learning	81%
AUT University	68%
Waikato Institute of Technology	60%
Christchurch Polytechnic Institute of Technology	60%
<b>Manukau Institute of Technology</b>	<b>59%</b>
Eastern Institute of Technology	57%
Waiariki Institute of Technology	56%
UNITEC New Zealand	51%
Northland Polytechnic	48%
Western Institute of Technology at Taranaki	33%
The University of Auckland	33%
Whitireia Community Polytechnic	23%
Massey University	13%

## MANUKAU INSTITUTE OF TECHNOLOGY

MIT's Faculty of Nursing and Health Studies has a proud reputation in nursing education. They offer a full range of courses – all developed to keep pace with the changing needs of the health sector. MIT's students consistently enjoy high pass rates in final examinations. With highly-qualified and skilled lecturers, their graduates achieve a high rate of employment both locally and internationally.

## Support for Māori students

A Māori Liaison Officer is available to assist students to choose their courses, understand scholarships and student loans. MIT's Nga Kete Wananga Marae supports cultural needs, incorporating a wharenui (Te Kete Uruuru Matua), a wharekai (Tahua Roa) and whānau room, Te Rourou Iti. Access to Māori Registered Nurses and Lecturers are provided. Students are encouraged and supported to attend national student hui.

## Qualifications offered

**Foundation Studies, Diploma in Enrolled Nursing, Bachelor of Nursing, Bachelor of Nursing Pacific**

Faculty of Nursing and Health Studies, Private Bag 94006, Manukau City 1730, Auckland

Information about this tertiary provider, qualifications offered and support for Māori students can be found on the website:

[www.manukau.ac.nz](http://www.manukau.ac.nz)

\* Timing of qualification completion: Where Schools have introduced new qualifications in preceding years, and not yet produced graduates from these programmes, the percentage of qualification completion may be understated.



## EFTS in Bachelor Degree

**2010 2011**  
**16% 15%**

This measure shows the percentage of Māori student EFTS in Bachelor Degree nursing programmes.

Waiariki Institute of Technology	31%
Eastern Institute of Technology	30%
Northland Polytechnic	30%
Whitireia Community Polytechnic	19%
Western Institute of Technology at Taranaki	16%
<b>Waikato Institute of Technology</b>	<b>15%</b>
UCOL Universal College of Learning	14%
Nelson Marlborough Institute of Technology	12%
Southern Institute of Technology	11%
Christchurch Polytechnic Institute of Technology	8%
Manukau Institute of Technology	8%
AUT University	7%
Massey University	7%
Otago Polytechnic	7%
UNITEC New Zealand	6%
The University of Auckland	4%



## Successful Completion of Courses

**2010 2011**  
**88% 87%**

This measure shows the proportion of courses in a given year that are successfully completed by Māori students.

Northland Polytechnic	94%
Christchurch Polytechnic Institute of Technology	94%
Otago Polytechnic	94%
Massey University	93%
Waiariki Institute of Technology	92%
Nelson Marlborough Institute of Technology	90%
Western Institute of Technology at Taranaki	89%
The University of Auckland	89%
<b>Waikato Institute of Technology</b>	<b>87%</b>
UCOL Universal College of Learning	87%
Eastern Institute of Technology	86%
AUT University	86%
Southern Institute of Technology	83%
Whitireia Community Polytechnic	81%
Manukau Institute of Technology	81%
UNITEC New Zealand	76%



## Students Retained in Study

**2010 2011**  
**70% 80%**

This measure shows the proportion of Māori students in a given year who complete a qualification or re-enrol at the same tertiary education organisation the following year.

Eastern Institute of Technology	96%
Manukau Institute of Technology	92%
Northland Polytechnic	90%
Waiariki Institute of Technology	87%
The University of Auckland	87%
Otago Polytechnic	86%
AUT University	85%
<b>Waikato Institute of Technology</b>	<b>80%</b>
Nelson Marlborough Institute of Technology	80%
Southern Institute of Technology	79%
Massey University	77%
Whitireia Community Polytechnic	74%
UNITEC New Zealand	71%
Christchurch Polytechnic Institute of Technology	70%
UCOL Universal College of Learning	65%
Western Institute of Technology at Taranaki	63%



## Completion of Qualification

**2010 2011**  
**49% 60%**

This measure shows the proportion of Māori students in a given year who complete a qualification.

Southern Institute of Technology	128%
Nelson Marlborough Institute of Technology	110%
Otago Polytechnic	108%
UCOL Universal College of Learning	81%
AUT University	68%
<b>Waikato Institute of Technology</b>	<b>60%</b>
Christchurch Polytechnic Institute of Technology	60%
Manukau Institute of Technology	59%
Eastern Institute of Technology	57%
Waiariki Institute of Technology	56%
UNITEC New Zealand	51%
Northland Polytechnic	48%
Western Institute of Technology at Taranaki	33%
The University of Auckland	33%
Whitireia Community Polytechnic	23%
Massey University	13%

### WAIKATO INSTITUTE OF TECHNOLOGY

The Bachelor of Nursing programme at WINTec has offered a pathway for Māori students since 1993. Students who identify as Māori can choose to study in the Tihei Mauri Ora (TMO) stream of the Bachelor of Nursing. This option allows students to study in a culturally supportive environment, with delivery led by Māori.

### Support for Māori students

Kaiawhina provide dedicated support for Māori students. Each

year of the Tihei Mauri Ora (TMO) stream has a Māori staff co-ordinator. Tutorials are run by Māori staff in a culturally-supportive environment. There is a whānau room for students and staff and a Māori student forum for students led by Māori staff. Māori students are supported to attend the annual hui and iwi clinical placements are used for Māori students. Students are supported to use Te Reo. Te Kete Kōhanga offers learning support for students and Wintec has a Marae with dedicated teaching spaces for students. Graduation ceremonies are held at the Marae for graduands.

### Qualifications offered

**Bachelor of Nursing, Bachelor of Nursing (Tihei Mauri Ora)**  
**Waikato Institute of Technology**

Centre for Health and Social Practice Private Bag 3036, Waikato Mail Centre. Hamilton

Information about this tertiary provider, qualifications offered and support for Māori students can be found on the website:

[www.wintec.ac.nz](http://www.wintec.ac.nz)



## EFTS in Bachelor Degree

This measure shows the percentage of Māori student EFTS in Bachelor Degree nursing programmes.

**2010 27%** **2011 31%**



## Successful Completion of Courses

This measure shows the proportion of courses in a given year that are successfully completed by Māori students.

**2010 93%** **2011 92%**



## Students Retained in Study

This measure shows the proportion of Māori students in a given year who complete a qualification or re-enrol at the same tertiary education organisation the following year.

**2010 82%** **2011 87%**



## Completion of Qualification

This measure shows the proportion of Māori students in a given year who complete a qualification.

**2010 55%** **2011 56%**

Waiariki Institute of Technology	31%
Eastern Institute of Technology	30%
Northland Polytechnic	30%
Whitireia Community Polytechnic	19%
Western Institute of Technology at Taranaki	16%
Waikato Institute of Technology	15%
UCOL Universal College of Learning	14%
Nelson Marlborough Institute of Technology	12%
Southern Institute of Technology	11%
Christchurch Polytechnic Institute of Technology	8%
Manukau Institute of Technology	8%
AUT University	7%
Massey University	7%
Otago Polytechnic	7%
UNITEC New Zealand	6%
The University of Auckland	4%

Northland Polytechnic	94%
Christchurch Polytechnic Institute of Technology	94%
Otago Polytechnic	94%
Massey University	93%
Waiariki Institute of Technology	92%
Nelson Marlborough Institute of Technology	90%
Western Institute of Technology at Taranaki	89%
The University of Auckland	89%
Waikato Institute of Technology	87%
UCOL Universal College of Learning	87%
Eastern Institute of Technology	86%
AUT University	86%
Southern Institute of Technology	83%
Whitireia Community Polytechnic	81%
Manukau Institute of Technology	81%
UNITEC New Zealand	76%

Eastern Institute of Technology	96%
Manukau Institute of Technology	92%
Northland Polytechnic	90%
Waiariki Institute of Technology	87%
The University of Auckland	87%
Otago Polytechnic	86%
AUT University	85%
Waikato Institute of Technology	80%
Nelson Marlborough Institute of Technology	80%
Southern Institute of Technology	79%
Massey University	77%
Whitireia Community Polytechnic	74%
UNITEC New Zealand	71%
Christchurch Polytechnic Institute of Technology	70%
UCOL Universal College of Learning	65%
Western Institute of Technology at Taranaki	63%

Southern Institute of Technology	128%
Nelson Marlborough Institute of Technology	110%
Otago Polytechnic	108%
UCOL Universal College of Learning	81%
AUT University	68%
Waikato Institute of Technology	60%
Christchurch Polytechnic Institute of Technology	60%
Manukau Institute of Technology	59%
Eastern Institute of Technology	57%
Waiariki Institute of Technology	56%
UNITEC New Zealand	51%
Northland Polytechnic	48%
Western Institute of Technology at Taranaki	33%
The University of Auckland	33%
Whitireia Community Polytechnic	23%
Massey University	13%

### WAIARIKI INSTITUTE OF TECHNOLOGY

The nursing degree at Waiariki aims to produce graduates who demonstrate competence to practice at a beginning level in all domains of practice. The Bachelor of Nursing enables graduates to work in a variety of clinical contexts to utilise nursing knowledge and complex nursing judgement to assess health needs and provide care and to advise and support people to manage their health.

### Support for Māori students

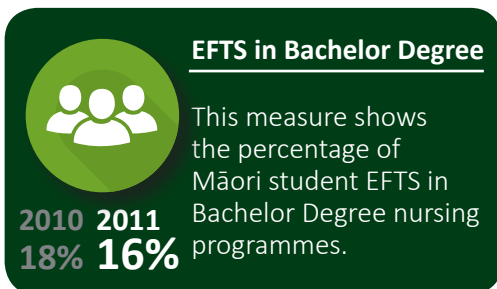
The Manaakitanga programme is based on the Māori concept of Manaakitanga (caring and support) that aims to foster the well-being of students so they may succeed and complete their study at Waiariki. The Manaakitanga service is designed to foster a culture of success and empower students to achieve their potential. Waiariki is somewhat unique in having an on-site marae named Tangatarua, which translates as "two peoples" and reflects the bicultural nature of the institute.

### Qualifications offered

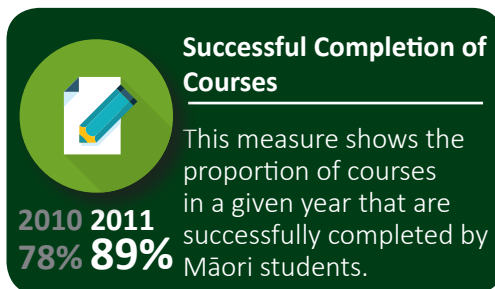
**Diploma of Enrolled Nursing, Bachelor of Health Science (Nursing)**  
Te Puna Whai Ora, School of Nursing and Health Studies,  
Private Bag RO 3028, Rotorua

Information about this tertiary provider, qualifications offered and support for Māori students can be found on the website:  
[www.waiariki.ac.nz](http://www.waiariki.ac.nz)

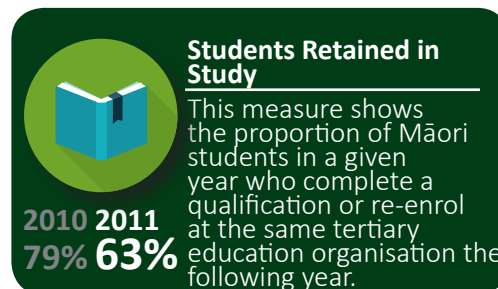
# WESTERN INSTITUTE OF TECHNOLOGY



Waiariki Institute of Technology	31%
Eastern Institute of Technology	30%
Northland Polytechnic	30%
Whitireia Community Polytechnic	19%
Western Institute of Technology at Taranaki	16%
Waikato Institute of Technology	15%
UCOL Universal College of Learning	14%
Nelson Marlborough Institute of Technology	12%
Southern Institute of Technology	11%
Christchurch Polytechnic Institute of Technology	8%
Manukau Institute of Technology	8%
AUT University	7%
Massey University	7%
Otago Polytechnic	7%
UNITEC New Zealand	6%
The University of Auckland	4%



Northland Polytechnic	94%
Christchurch Polytechnic Institute of Technology	94%
Otago Polytechnic	94%
Massey University	93%
Waiariki Institute of Technology	92%
Nelson Marlborough Institute of Technology	90%
Western Institute of Technology at Taranaki	89%
The University of Auckland	89%
Waikato Institute of Technology	87%
UCOL Universal College of Learning	87%
Eastern Institute of Technology	86%
AUT University	86%
Southern Institute of Technology	83%
Whitireia Community Polytechnic	81%
Manukau Institute of Technology	81%
UNITEC New Zealand	76%



Eastern Institute of Technology	96%
Manukau Institute of Technology	92%
Northland Polytechnic	90%
Waiariki Institute of Technology	87%
The University of Auckland	87%
Otago Polytechnic	86%
AUT University	85%
Waikato Institute of Technology	80%
Nelson Marlborough Institute of Technology	80%
Southern Institute of Technology	79%
Massey University	77%
Whitireia Community Polytechnic	74%
UNITEC New Zealand	71%
Christchurch Polytechnic Institute of Technology	70%
UCOL Universal College of Learning	65%
Western Institute of Technology at Taranaki	63%



Southern Institute of Technology	128%
Nelson Marlborough Institute of Technology	110%
Otago Polytechnic	108%
UCOL Universal College of Learning	81%
AUT University	68%
Waikato Institute of Technology	60%
Christchurch Polytechnic Institute of Technology	60%
Manukau Institute of Technology	59%
Eastern Institute of Technology	57%
Waiariki Institute of Technology	56%
UNITEC New Zealand	51%
Northland Polytechnic	48%
Western Institute of Technology at Taranaki	33%
The University of Auckland	33%
Whitireia Community Polytechnic	23%
Massey University	13%

## WESTERN INSTITUTE OF TECHNOLOGY

The Bachelor of Nursing has comprehensive clinical learning facilities both at WITT and at Taranaki Hospital. Clinical practice also involves working alongside registered and experienced nurses and lecturers in a variety of health settings. Students develop their professional profile with theoretical learning in WITT'S Nursing Hub, including a room set out as a hospital ward, the science lab and access to the latest online technology.

## Support for Māori students

WITT is committed to developing strong, meaningful partnerships with Māori, to meet Māori community long-term needs. In Te Reo Māori, 'Ako' means both to learn and to teach. This duality expresses the essence of our philosophy of learning and teaching. Good learning takes place when an effective partnership is created between learners and teachers. Nursing students are supported to attend Māori nursing student hui.

## Qualifications offered

### Bachelor of Health Science (Nursing)

Faculty of Humanities, Private Bag 2030, New Plymouth 4620

Information about this tertiary provider, qualifications offered and support for Māori students can be found on the website:

[www.witt.ac.nz](http://www.witt.ac.nz)



## EFTS in Bachelor Degree

This measure shows the percentage of Māori student EFTS in Bachelor Degree nursing programmes.

**2010 2011**  
**6% 7%**



## Successful Completion of Courses

This measure shows the proportion of courses in a given year that are successfully completed by Māori students.

**2010 2011**  
**82% 93%**



## Students Retained in Study

This measure shows the proportion of Māori students in a given year who complete a qualification or re-enrol at the same tertiary education organisation the following year.

**2010 2011**  
**58% 77%**



## Completion of Qualification

This measure shows the proportion of Māori students in a given year who complete a qualification.

**2010 2011**  
**31% 13%**

Waiariki Institute of Technology	31%
Eastern Institute of Technology	30%
Northland Polytechnic	30%
Whitireia Community Polytechnic	19%
Western Institute of Technology at Taranaki	16%
Waikato Institute of Technology	15%
UCOL Universal College of Learning	14%
Nelson Marlborough Institute of Technology	12%
Southern Institute of Technology	11%
Christchurch Polytechnic Institute of Technology	8%
Manukau Institute of Technology	8%
AUT University	7%
<b>Massey University</b>	<b>7%</b>
Otago Polytechnic	7%
UNITEC New Zealand	6%
The University of Auckland	4%

Northland Polytechnic	94%
Christchurch Polytechnic Institute of Technology	94%
Otago Polytechnic	94%
<b>Massey University</b>	<b>93%</b>
Waiariki Institute of Technology	92%
Nelson Marlborough Institute of Technology	90%
Western Institute of Technology at Taranaki	89%
The University of Auckland	89%
Waikato Institute of Technology	87%
UCOL Universal College of Learning	87%
Eastern Institute of Technology	86%
AUT University	86%
Southern Institute of Technology	83%
Whitireia Community Polytechnic	81%
Manukau Institute of Technology	81%
UNITEC New Zealand	76%

Eastern Institute of Technology	96%
Manukau Institute of Technology	92%
Northland Polytechnic	90%
Waiariki Institute of Technology	87%
The University of Auckland	87%
Otago Polytechnic	86%
AUT University	85%
Waikato Institute of Technology	80%
Nelson Marlborough Institute of Technology	80%
Southern Institute of Technology	79%
<b>Massey University</b>	<b>77%</b>
Whitireia Community Polytechnic	74%
UNITEC New Zealand	71%
Christchurch Polytechnic Institute of Technology	70%
UCOL Universal College of Learning	65%
Western Institute of Technology at Taranaki	63%

Southern Institute of Technology	128%
Nelson Marlborough Institute of Technology	110%
Otago Polytechnic	108%
UCOL Universal College of Learning	81%
AUT University	68%
Waikato Institute of Technology	60%
Christchurch Polytechnic Institute of Technology	60%
Manukau Institute of Technology	59%
Eastern Institute of Technology	57%
Waiariki Institute of Technology	56%
UNITEC New Zealand	51%
Northland Polytechnic	48%
Western Institute of Technology at Taranaki	33%
The University of Auckland	33%
Whitireia Community Polytechnic	23%
<b>Massey University</b>	<b>13%</b>

### MASSEY UNIVERSITY

Massey University's nursing programme provides high-quality undergraduate and postgraduate programmes. The university is known for their staff, who are committed to creating a supportive learning environment and providing the best experience for nursing students. The programme prepares students to become registered nurses, as well as assisting those who are registered to further develop their careers.

### Support for Māori students

The Kaitautoko (Māori Student Advisory) service helps students within the university. Te Rau Whakaara' is 'tauirā i te tuatahi' (students first), embraces internal and distance learners into the Massey whānau. Staff meet regularly with Māori nursing students and encourage 'kanohi ki te kanohi' (face to face) sessions. Te Rau Puawai Scholarships provide bursaries to cover fees and some related course cost to support completion.

### Qualifications offered

#### Bachelor of Nursing

School of Health Sciences, Private Bag 11-222, Palmerston North

Information about this tertiary provider, qualifications offered and support for Māori students can be found on the website:

[www.massey.ac.nz/massey/learning/colleges](http://www.massey.ac.nz/massey/learning/colleges)





## EFTS in Bachelor Degree

**2010 2011**  
**21% 14%**

This measure shows the percentage of Māori student EFTS in Bachelor Degree nursing programmes.

Waiariki Institute of Technology	31%
Eastern Institute of Technology	30%
Northland Polytechnic	30%
Whitireia Community Polytechnic	19%
Western Institute of Technology at Taranaki	16%
Waikato Institute of Technology	15%
<b>UCOL Universal College of Learning</b>	<b>14%</b>
Nelson Marlborough Institute of Technology	12%
Southern Institute of Technology	11%
Christchurch Polytechnic Institute of Technology	8%
Manukau Institute of Technology	8%
AUT University	7%
Massey University	7%
Otago Polytechnic	7%
UNITEC New Zealand	6%
The University of Auckland	4%



## Successful Completion of Courses

**2010 2011**  
**87% 87%**

This measure shows the proportion of courses in a given year that are successfully completed by Māori students.

Northland Polytechnic	94%
Christchurch Polytechnic Institute of Technology	94%
Otago Polytechnic	94%
Massey University	93%
Waiariki Institute of Technology	92%
Nelson Marlborough Institute of Technology	90%
Western Institute of Technology at Taranaki	89%
The University of Auckland	89%
Waikato Institute of Technology	87%
<b>UCOL Universal College of Learning</b>	<b>87%</b>
Eastern Institute of Technology	86%
AUT University	86%
Southern Institute of Technology	83%
Whitireia Community Polytechnic	81%
Manukau Institute of Technology	81%
UNITEC New Zealand	76%



## Students Retained in Study

**2010 2011**  
**72% 65%**

This measure shows the proportion of Māori students in a given year who complete a qualification or re-enrol at the same tertiary education organisation the following year.

Eastern Institute of Technology	96%
Manukau Institute of Technology	92%
Northland Polytechnic	90%
Waiariki Institute of Technology	87%
The University of Auckland	87%
Otago Polytechnic	86%
AUT University	85%
Waikato Institute of Technology	80%
Nelson Marlborough Institute of Technology	80%
Southern Institute of Technology	79%
Massey University	77%
Whitireia Community Polytechnic	74%
UNITEC New Zealand	71%
Christchurch Polytechnic Institute of Technology	70%
<b>UCOL Universal College of Learning</b>	<b>65%</b>
Western Institute of Technology at Taranaki	63%



## Completion of Qualification

**2010 2011**  
**89% 81%**

This measure shows the proportion of Māori students in a given year who complete a qualification.

Southern Institute of Technology	128%
Nelson Marlborough Institute of Technology	110%
Otago Polytechnic	108%
<b>UCOL Universal College of Learning</b>	<b>81%</b>
AUT University	68%
Waikato Institute of Technology	60%
Christchurch Polytechnic Institute of Technology	60%
Manukau Institute of Technology	59%
Eastern Institute of Technology	57%
Waiariki Institute of Technology	56%
UNITEC New Zealand	51%
Northland Polytechnic	48%
Western Institute of Technology at Taranaki	33%
The University of Auckland	33%
Whitireia Community Polytechnic	23%
Massey University	13%

### UNIVERSAL COLLEGE OF LEARNING

UCOL's approach helps students succeed in getting their nursing career off to the best start. For almost 30 years UCOL's nurse education team has provided a supportive and caring culture to ensure their nursing graduates pass the Nursing Council State Finals Examination with flying colours. UCOL's nursing graduates enjoy an excellent professional reputation both here and overseas.

### Support for Māori students

Māori student support is an organisational goal. UCOL is committed to the obligations of the Tiriti o Waitangi and working with whānau, hapū and iwi to ensure Māori achieve educational success as Māori. UCOL have kaiawhina support staff on campus to assist students with issues and challenges.

### Qualifications offered

**Certificate in Science and Health, Bachelor of Health Science (Nursing)**

Faculty of Health Science, Private Bag 11 0222, Palmerston North

Information about this tertiary provider, qualifications offered and support for Māori students can be found on the website:

[www.ucol.ac.nz](http://www.ucol.ac.nz)



## EFTS in Bachelor Degree

This measure shows the percentage of Māori student EFTS in Bachelor Degree nursing programmes.

2010 **23%** 2011 **30%**



## Successful Completion of Courses

This measure shows the proportion of courses in a given year that are successfully completed by Māori students.

2010 **89%** 2011 **86%**



## Students Retained in Study

This measure shows the proportion of Māori students in a given year who complete a qualification or re-enrol at the same tertiary education organisation the following year.

2010 **92%** 2011 **96%**



## Completion of Qualification

This measure shows the proportion of Māori students in a given year who complete a qualification.

2010 **71%** 2011 **57%**

Waiariki Institute of Technology	31%
Eastern Institute of Technology	30%
Northland Polytechnic	30%
Whitireia Community Polytechnic	19%
Western Institute of Technology at Taranaki	16%
Waikato Institute of Technology	15%
UCOL Universal College of Learning	14%
Nelson Marlborough Institute of Technology	12%
Southern Institute of Technology	11%
Christchurch Polytechnic Institute of Technology	8%
Manukau Institute of Technology	8%
AUT University	7%
Massey University	7%
Otago Polytechnic	7%
UNITEC New Zealand	6%
The University of Auckland	4%

Northland Polytechnic	94%
Christchurch Polytechnic Institute of Technology	94%
Otago Polytechnic	94%
Massey University	93%
Waiariki Institute of Technology	92%
Nelson Marlborough Institute of Technology	90%
Western Institute of Technology at Taranaki	89%
The University of Auckland	89%
Waikato Institute of Technology	87%
UCOL Universal College of Learning	87%
Eastern Institute of Technology	86%
AUT University	86%
Southern Institute of Technology	83%
Whitireia Community Polytechnic	81%
Manukau Institute of Technology	81%
UNITEC New Zealand	76%

Eastern Institute of Technology	96%
Manukau Institute of Technology	92%
Northland Polytechnic	90%
Waiariki Institute of Technology	87%
The University of Auckland	87%
Otago Polytechnic	86%
AUT University	85%
Waikato Institute of Technology	80%
Nelson Marlborough Institute of Technology	80%
Southern Institute of Technology	79%
Massey University	77%
Whitireia Community Polytechnic	74%
UNITEC New Zealand	71%
Christchurch Polytechnic Institute of Technology	70%
UCOL Universal College of Learning	65%
Western Institute of Technology at Taranaki	63%

Southern Institute of Technology	128%
Nelson Marlborough Institute of Technology	110%
Otago Polytechnic	108%
UCOL Universal College of Learning	81%
AUT University	68%
Waikato Institute of Technology	60%
Christchurch Polytechnic Institute of Technology	60%
Manukau Institute of Technology	59%
Eastern Institute of Technology	57%
Waiariki Institute of Technology	56%
UNITEC New Zealand	51%
Northland Polytechnic	48%
Western Institute of Technology at Taranaki	33%
The University of Auckland	33%
Whitireia Community Polytechnic	23%
Massey University	13%

## EASTERN INSTITUTE OF TECHNOLOGY

EIT prides itself on preparing its graduates for professional practice in dynamic, challenging and satisfying fields of nursing. EIT'S nursing graduates are highly-sought-after, skilled practitioners. The facilities and resources include the Clinical Arts and Technology (CAT) Centre, a simulated practice environment including simulated learning technology, computer assisted resources and a procedures room.

## Support for Māori students

Academic and cultural support includes access to kuia/kaumatua/pouwhirinaki. Māori support services provide advice and advocacy in, cultural needs, financial advice, iwi grants scholarships. A whānau room, a Māori nursing student support group and access to Māori registered nurses and lecturers are provided within EIT Bachelor of Nursing Programme. Students are encouraged and supported to attend national student hui.

## Qualifications offered

### Bachelor of Nursing

Faculty of Health and Sport Science, Private Bag 1201, Taradale

Information about this tertiary provider, qualifications offered and support for Māori students can be found on the website:

[www.eit.ac.nz](http://www.eit.ac.nz)



# WHITIREIA COMMUNITY POLYTECHNIC



## EFTS in Bachelor Degree

This measure shows the percentage of Māori student EFTS in Bachelor Degree nursing programmes.

**2010 22%** **2011 19%**



## Successful Completion of Courses

This measure shows the proportion of courses in a given year that are successfully completed by Māori students.

**2010 65%** **2011 81%**



## Students Retained in Study

This measure shows the proportion of Māori students in a given year who complete a qualification or re-enrol at the same tertiary education organisation the following year.

**2010 92%** **2011 74%**



## Completion of Qualification

This measure shows the proportion of Māori students in a given year who complete a qualification.

**2010 92%** **2011 23%\***

Waiariki Institute of Technology	31%
Eastern Institute of Technology	30%
Northland Polytechnic	30%
Whitireia Community Polytechnic	19%
Western Institute of Technology at Taranaki	16%
Waikato Institute of Technology	15%
UCOL Universal College of Learning	14%
Nelson Marlborough Institute of Technology	12%
Southern Institute of Technology	11%
Christchurch Polytechnic Institute of Technology	8%
Manukau Institute of Technology	8%
AUT University	7%
Massey University	7%
Otago Polytechnic	7%
UNITEC New Zealand	6%
The University of Auckland	4%

Northland Polytechnic	94%
Christchurch Polytechnic Institute of Technology	94%
Otago Polytechnic	94%
Massey University	93%
Waiariki Institute of Technology	92%
Nelson Marlborough Institute of Technology	90%
Western Institute of Technology at Taranaki	89%
The University of Auckland	89%
Waikato Institute of Technology	87%
UCOL Universal College of Learning	87%
Eastern Institute of Technology	86%
AUT University	86%
Southern Institute of Technology	83%
Whitireia Community Polytechnic	81%
Manukau Institute of Technology	81%
UNITEC New Zealand	76%

Eastern Institute of Technology	96%
Manukau Institute of Technology	92%
Northland Polytechnic	90%
Waiariki Institute of Technology	87%
The University of Auckland	87%
Otago Polytechnic	86%
AUT University	85%
Waikato Institute of Technology	80%
Nelson Marlborough Institute of Technology	80%
Southern Institute of Technology	79%
Massey University	77%
Whitireia Community Polytechnic	74%
UNITEC New Zealand	71%
Christchurch Polytechnic Institute of Technology	70%
UCOL Universal College of Learning	65%
Western Institute of Technology at Taranaki	63%

Southern Institute of Technology	128%
Nelson Marlborough Institute of Technology	110%
Otago Polytechnic	108%
UCOL Universal College of Learning	81%
AUT University	68%
Waikato Institute of Technology	60%
Christchurch Polytechnic Institute of Technology	60%
Manukau Institute of Technology	59%
Eastern Institute of Technology	57%
Waiariki Institute of Technology	56%
UNITEC New Zealand	51%
Northland Polytechnic	48%
Western Institute of Technology at Taranaki	33%
The University of Auckland	33%
Whitireia Community Polytechnic	23%
Massey University	13%

### WHITIREIA COMMUNITY POLYTECHNIC

Whitireia has 25 years for producing work-ready nursing graduates highly-regarded by the industry. Graduates have sound academic knowledge and are highly-valued beginning clinicians who gain employment. The Whitireia Community Polytechnic is unique in that it offers three different programmes for nursing, a Bachelor of Nursing, a Bachelor of Nursing Māori and a Bachelor of Nursing Pacific.

### Support for Māori students

The degree is a combination of theory (classroom-based sessions at the Porirua campus) and supported clinical experience (practical/hands-on work, which is undertaken in a variety of community and hospital settings. Te Pae Mahutonga, the Bachelor of Nursing Māori is a three-year programme running full-time following the Māori calendar. The point of difference for this degree is the use of Māori pedagogy that encapsulates and validates whānau, hapū and iwi ways of knowing.

### Qualifications offered

**Bachelor of Nursing, Bachelor of Nursing 'Māori', Bachelor of Nursing 'Pacific'**

Nursing Centres of Learning, Faculty of Health,  
Private Bag 50 910, Porirua

Information about this tertiary provider, qualifications offered and support for Māori students can be found on the website:

[www.whitireia.ac.nz](http://www.whitireia.ac.nz)

# NELSON MARLBOROUGH INSTITUTE OF TECHNOLOGY



## EFTS in Bachelor Degree

**2010 2011**  
**10% 12%**

This measure shows the percentage of Māori student EFTS in Bachelor Degree nursing programmes.



## Successful Completion of Courses

**2010 2011**  
**93% 90%**

This measure shows the proportion of courses in a given year that are successfully completed by Māori students.



## Students Retained in Study

**2010 2011**  
**86% 80%**

This measure shows the proportion of Māori students in a given year who complete a qualification or re-enrol at the same tertiary education organisation the following year.



## Completion of Qualification

**2010 2011**  
**0% 110%\***

This measure shows the proportion of Māori students in a given year who complete a qualification.

Waiariki Institute of Technology	31%
Eastern Institute of Technology	30%
Northland Polytechnic	30%
Whitireia Community Polytechnic	19%
Western Institute of Technology at Taranaki	16%
Waikato Institute of Technology	15%
UCOL Universal College of Learning	14%
<b>Nelson Marlborough Institute of Technology</b>	<b>12%</b>
Southern Institute of Technology	11%
Christchurch Polytechnic Institute of Technology	8%
Manukau Institute of Technology	8%
AUT University	7%
Massey University	7%
Otago Polytechnic	7%
UNITEC New Zealand	6%
The University of Auckland	4%

Northland Polytechnic	94%
Christchurch Polytechnic Institute of Technology	94%
Otago Polytechnic	94%
Massey University	93%
Waiariki Institute of Technology	92%
<b>Nelson Marlborough Institute of Technology</b>	<b>90%</b>
Western Institute of Technology at Taranaki	89%
The University of Auckland	89%
Waikato Institute of Technology	87%
UCOL Universal College of Learning	87%
Eastern Institute of Technology	86%
AUT University	86%
Southern Institute of Technology	83%
Whitireia Community Polytechnic	81%
Manukau Institute of Technology	81%
UNITEC New Zealand	76%

Eastern Institute of Technology	96%
Manukau Institute of Technology	92%
Northland Polytechnic	90%
Waiariki Institute of Technology	87%
The University of Auckland	87%
Otago Polytechnic	86%
AUT University	85%
Waikato Institute of Technology	80%
<b>Nelson Marlborough Institute of Technology</b>	<b>80%</b>
Southern Institute of Technology	79%
Massey University	77%
Whitireia Community Polytechnic	74%
UNITEC New Zealand	71%
Christchurch Polytechnic Institute of Technology	70%
UCOL Universal College of Learning	65%
Western Institute of Technology at Taranaki	63%

Southern Institute of Technology	128%
<b>Nelson Marlborough Institute of Technology</b>	<b>110%</b>
Otago Polytechnic	108%
UCOL Universal College of Learning	81%
AUT University	68%
Waikato Institute of Technology	60%
Christchurch Polytechnic Institute of Technology	60%
Manukau Institute of Technology	59%
Eastern Institute of Technology	57%
Waiariki Institute of Technology	56%
UNITEC New Zealand	51%
Northland Polytechnic	48%
Western Institute of Technology at Taranaki	33%
The University of Auckland	33%
Whitireia Community Polytechnic	23%
Massey University	13%

### NELSON MARLBOROUGH INSTITUTE OF TECHNOLOGY

The Bachelor of Nursing is delivered in Nelson and prepares students for a challenging and rewarding career in nursing. As an applied degree, it combines theoretical learning, skills laboratories and clinical practice to offer its students a range of learning environments. Those who complete the degree will gain the skills and experience needed to work in a wide variety of areas from the public health service to independent practice, nationally and internationally.

### Support for Māori students

Have a shared set of core values developed with Te Kaunihera iwi which support good cultural practice, consideration, and responsiveness in engagement and facilitation. NMIT conducts their activities in respect of the cultural needs of iwi and Māori. The Māori Liaison/ Kaitakawaenga supports all Māori students to achieve their study goals, assisting with scholarships and referral to appropriate support in the wider community. Nursing students are encouraged to attend national student hui.

### Qualifications offered

**Bachelor Of Nursing**  
School of Health, Private Bag 19, Nelson

Information about this tertiary provider, qualifications offered and support for Māori students can be found on the website:  
[www.nmit.ac.nz](http://www.nmit.ac.nz)

\* Due to the inclusion of additional EFTS carried over from preceding years and counted in this time period the completion of qualification may be over 100%.

# CHRISTCHURCH POLYTECHNIC INSTITUTE OF TECHNOLOGY



## EFTS in Bachelor Degree

This measure shows the percentage of Māori student EFTS in Bachelor Degree nursing programmes.

2010 2011  
7% 8%

Waiariki Institute of Technology	31%
Eastern Institute of Technology	30%
Northland Polytechnic	30%
Whitireia Community Polytechnic	19%
Western Institute of Technology at Taranaki	16%
Waikato Institute of Technology	15%
UCOL Universal College of Learning	14%
Nelson Marlborough Institute of Technology	12%
Southern Institute of Technology	11%
Christchurch Polytechnic Institute of Technology	8%
Manukau Institute of Technology	8%
AUT University	7%
Massey University	7%
Otago Polytechnic	7%
UNITEC New Zealand	6%
The University of Auckland	4%



## Successful Completion of Courses

This measure shows the proportion of courses in a given year that are successfully completed by Māori students.

2010 2011  
93% 94%

Northland Polytechnic	94%
Christchurch Polytechnic Institute of Technology	94%
Otago Polytechnic	94%
Massey University	93%
Waiariki Institute of Technology	92%
Nelson Marlborough Institute of Technology	90%
Western Institute of Technology at Taranaki	89%
The University of Auckland	89%
Waikato Institute of Technology	87%
UCOL Universal College of Learning	87%
Eastern Institute of Technology	86%
AUT University	86%
Southern Institute of Technology	83%
Whitireia Community Polytechnic	81%
Manukau Institute of Technology	81%
UNITEC New Zealand	76%



## Students Retained in Study

This measure shows the proportion of Māori students in a given year who complete a qualification or re-enrol at the same tertiary education organisation the following year.

2010 2011  
62% 70%

Eastern Institute of Technology	96%
Manukau Institute of Technology	92%
Northland Polytechnic	90%
Waiariki Institute of Technology	87%
The University of Auckland	87%
Otago Polytechnic	86%
AUT University	85%
Waikato Institute of Technology	80%
Nelson Marlborough Institute of Technology	80%
Southern Institute of Technology	79%
Massey University	77%
Whitireia Community Polytechnic	74%
UNITEC New Zealand	71%
Christchurch Polytechnic Institute of Technology	70%
UCOL Universal College of Learning	65%
Western Institute of Technology at Taranaki	63%



## Completion of Qualification

This measure shows the proportion of Māori students in a given year who complete a qualification.

2010 2011  
43% 60%

Southern Institute of Technology	128%
Nelson Marlborough Institute of Technology	110%
Otago Polytechnic	108%
UCOL Universal College of Learning	81%
AUT University	68%
Waikato Institute of Technology	60%
Christchurch Polytechnic Institute of Technology	60%
Manukau Institute of Technology	59%
Eastern Institute of Technology	57%
Waiariki Institute of Technology	56%
UNITEC New Zealand	51%
Northland Polytechnic	48%
Western Institute of Technology at Taranaki	33%
The University of Auckland	33%
Whitireia Community Polytechnic	23%
Massey University	13%

### CHRISTCHURCH POLYTECHNIC INSTITUTE OF TECHNOLOGY

At CPIT students enjoy the benefits of experienced staff, up-to-date equipment and a range of quality clinical placements. The programme combines theory with clinical experience. The curriculum challenges students to go beyond traditional health or illness care and focus on how to create a supportive environment for health and well-being.

#### Support for Māori students

CPIT aims to provide an appropriate learning environment for Māori.

Te Wanaka o Otautahi is a support service for Māori based on tikanga Māori, including Manaakitanga (meeting the needs of people), mama tangata (integrity and professionalism) and rereketenga (nurturing diversity and promoting innovation). Te Wanaka staff are available to assist students with issues they may have relating to their studies. The Department of Nursing has a roopu Kawa Whakaruruhau which provides formal liaison with iwi and Māori health professionals. Māori academic staff provide discipline specific support to students in addition to organisation wide services.

### Qualifications offered

#### Bachelor of Nursing

School of Nursing Faculty of Health & Sciences,  
CPIT, PO Box 540, Christchurch 8051

Information about this tertiary provider, qualifications offered and support for Māori students can be found on the website:

[www.cpit.ac.nz](http://www.cpit.ac.nz)

# OTAGO POLYTECHNIC



## EFTS in Bachelor Degree

This measure shows the percentage of Māori student EFTS in Bachelor Degree nursing programmes.

2010 2011  
7% 7%



## Successful Completion of Courses

This measure shows the proportion of courses in a given year that are successfully completed by Māori students.

2010 2011  
98% 94%



## Students Retained in Study

This measure shows the proportion of Māori students in a given year who complete a qualification or re-enrol at the same tertiary education organisation the following year.

2010 2011  
100% 86%



## Completion of Qualification

This measure shows the proportion of Māori students in a given year who complete a qualification.

2010 2011  
73% 108%\*

Waiariki Institute of Technology	31%
Eastern Institute of Technology	30%
Northland Polytechnic	30%
Whitireia Community Polytechnic	19%
Western Institute of Technology at Taranaki	16%
Waikato Institute of Technology	15%
UCOL Universal College of Learning	14%
Nelson Marlborough Institute of Technology	12%
Southern Institute of Technology	11%
Christchurch Polytechnic Institute of Technology	8%
Manukau Institute of Technology	8%
AUT University	7%
Massey University	7%
Otago Polytechnic	7%
UNITEC New Zealand	6%
The University of Auckland	4%

Northland Polytechnic	94%
Christchurch Polytechnic Institute of Technology	94%
Otago Polytechnic	94%
Massey University	93%
Waiariki Institute of Technology	92%
Nelson Marlborough Institute of Technology	90%
Western Institute of Technology at Taranaki	89%
The University of Auckland	89%
Waikato Institute of Technology	87%
UCOL Universal College of Learning	87%
Eastern Institute of Technology	86%
AUT University	86%
Southern Institute of Technology	83%
Whitireia Community Polytechnic	81%
Manukau Institute of Technology	81%
UNITEC New Zealand	76%

Eastern Institute of Technology	96%
Manukau Institute of Technology	92%
Northland Polytechnic	90%
Waiariki Institute of Technology	87%
The University of Auckland	87%
Otago Polytechnic	86%
AUT University	85%
Waikato Institute of Technology	80%
Nelson Marlborough Institute of Technology	80%
Southern Institute of Technology	79%
Massey University	77%
Whitireia Community Polytechnic	74%
UNITEC New Zealand	71%
Christchurch Polytechnic Institute of Technology	70%
UCOL Universal College of Learning	65%
Western Institute of Technology at Taranaki	63%

Southern Institute of Technology	128%
Nelson Marlborough Institute of Technology	110%
Otago Polytechnic	108%
UCOL Universal College of Learning	81%
AUT University	68%
Waikato Institute of Technology	60%
Christchurch Polytechnic Institute of Technology	60%
Manukau Institute of Technology	59%
Eastern Institute of Technology	57%
Waiariki Institute of Technology	56%
UNITEC New Zealand	51%
Northland Polytechnic	48%
Western Institute of Technology at Taranaki	33%
The University of Auckland	33%
Whitireia Community Polytechnic	23%
Massey University	13%

### OTAGO POLYTECHNIC

The Bachelor of Nursing Programme aims to educate students to the highest professional standards in nursing. The programme is 50 per cent theory: 50 per cent clinical work with opportunities to practise in a variety of settings. With access to state-of-the-art facilities, and the latest industry knowledge, nursing students graduate from the Otago Polytechnic with the experience and confidence to enter the world of healthcare.

### Support for Māori students

The Kaiarahi role at Otago Polytechnic provides support, peer tutoring, as well as a range of other services to guide individual student journeys. Māori students are welcomed to Otago Polytechnic with a letter from the Kaiarahi. Student hui works well, with Māori academic staff who support, awhi, and regularly meet to listen to concerns and assist where necessary to enhance student success. Access to Māori registered nurses and lecturers are provided within the programme.

Students are supported to attend national student hui.

### Qualifications offered

**Certificate in Health, Bachelor of Nursing**  
School of Nursing Private Bag 1910, Dunedin

Information about this tertiary provider, qualifications offered and support for Māori students can be found on the website:  
[www.otagopolytechnic.ac.nz](http://www.otagopolytechnic.ac.nz)

\*Due to the inclusion of additional EFTS carried over from preceding years and counted in this time period the completion of qualification may be over 100%.

# SOUTHERN INSTITUTE OF TECHNOLOGY



## EFTS in Bachelor Degree

This measure shows the percentage of Māori student EFTS in Bachelor Degree nursing programmes.

**2010 2011**  
**12% 11%**

Waiariki Institute of Technology	31%
Eastern Institute of Technology	30%
Northland Polytechnic	30%
Whitireia Community Polytechnic	19%
Western Institute of Technology at Taranaki	16%
Waikato Institute of Technology	15%
UCOL Universal College of Learning	14%
Nelson Marlborough Institute of Technology	12%
<b>Southern Institute of Technology</b>	<b>11%</b>
Christchurch Polytechnic Institute of Technology	8%
Manukau Institute of Technology	8%
AUT University	7%
Massey University	7%
Otago Polytechnic	7%
UNITEC New Zealand	6%
The University of Auckland	4%



## Successful Completion of Courses

This measure shows the proportion of courses in a given year that are successfully completed by Māori students.

**2010 2011**  
**72% 83%**

Northland Polytechnic	94%
Christchurch Polytechnic Institute of Technology	94%
Otago Polytechnic	94%
Massey University	93%
Waiariki Institute of Technology	92%
Nelson Marlborough Institute of Technology	90%
Western Institute of Technology at Taranaki	89%
The University of Auckland	89%
Waikato Institute of Technology	87%
UCOL Universal College of Learning	87%
Eastern Institute of Technology	86%
AUT University	86%
<b>Southern Institute of Technology</b>	<b>83%</b>
Whitireia Community Polytechnic	81%
Manukau Institute of Technology	81%
UNITEC New Zealand	76%



## Students Retained in Study

This measure shows the proportion of Māori students in a given year who complete a qualification or re-enrol at the same tertiary education organisation the following year.

**2010 2011**  
**90% 79%**

Eastern Institute of Technology	96%
Manukau Institute of Technology	92%
Northland Polytechnic	90%
Waiariki Institute of Technology	87%
The University of Auckland	87%
Otago Polytechnic	86%
AUT University	85%
Waikato Institute of Technology	80%
Nelson Marlborough Institute of Technology	80%
<b>Southern Institute of Technology</b>	<b>79%</b>
Massey University	77%
Whitireia Community Polytechnic	74%
UNITEC New Zealand	71%
Christchurch Polytechnic Institute of Technology	70%
UCOL Universal College of Learning	65%
Western Institute of Technology at Taranaki	63%



## Completion of Qualification

This measure shows the proportion of Māori students in a given year who complete a qualification.

**2010 2011**  
**34% 128%\***

<b>Southern Institute of Technology</b>	<b>128%</b>
Nelson Marlborough Institute of Technology	110%
Otago Polytechnic	108%
UCOL Universal College of Learning	81%
AUT University	68%
Waikato Institute of Technology	60%
Christchurch Polytechnic Institute of Technology	60%
Manukau Institute of Technology	59%
Eastern Institute of Technology	57%
Waiariki Institute of Technology	56%
UNITEC New Zealand	51%
Northland Polytechnic	48%
Western Institute of Technology at Taranaki	33%
The University of Auckland	33%
Whitireia Community Polytechnic	23%
Massey University	13%

### SOUTHERN INSTITUTE OF TECHNOLOGY

SITS School of Nursing provides specialist equipment for their students, including computerised mannequins, life-size models of body parts and a large library of DVD resources and textbooks. Their clinical placements provide real-life experience for those looking at a career in nursing. SIT offers a Certificate in Pre-Entry to prepare students for entry into the Bachelor of Nursing/Diploma Enrolled Nursing.

### Support for Māori students

Māori support is in the form of He Mana Tapuhi for all Māori and Pacific Island nursing students. It is a mentoring programme which is facilitated through Māori registered nurses working within various health settings around Southland. SIT also has a whānau room which is well-utilised by students. There is also a Kawa Whakaruruhau Rōopu advisory that meets three times a year.

### Qualifications offered

**Certificate in Pre-Entry to the Bachelor of Nursing, Diploma Enrolled Nursing, Bachelor of Nursing, Post Graduate Diploma Health Sciences**

School of Nursing, Private Bag 90 114, Invercargill

Information about this tertiary provider, qualifications offered and support for Māori students can be found on the website:

[www.sit.ac.nz](http://www.sit.ac.nz)

\* Due to the inclusion of additional EFTS carried over from preceding years and counted in this time period, the completion of qualification may be over 100%.





## DATA DEFINITIONS

### Ethnicity data

- Nursing Council of New Zealand: Nurses are allowed to nominate up to three ethnic groups. Ethnicity data is not prioritised. Nurses who report multiple ethnicities are counted once in each ethnic group they identify with. For example, if a nurse identifies as Pakeha, Māori and Chinese, their responses will be included as part of the data for all three of these ethnic groups.
- Tertiary Education Commission: TEOs may report up to three ethnicity codes for a student. Students who report multiple ethnicities are counted once in each group with which they identified themselves. For example, a student who reports both Māori and Tongan ethnicities is counted once in the Māori group and once in the Pacific group.

### Glossary of Terms

ACE	Advanced Choice of Employment
DHB	District Health Board
EFT	Equivalent full-time student
HWNZ	Health Workforce New Zealand
NCNZ	Nursing Council of New Zealand
NETP	Nursing Entry to Practice
TEC	Tertiary Education Commission
TEO	Tertiary Education Organisation
VBS	Voluntary Bonding Scheme

### TEC Indicator Definitions

The following definitions have been taken from TECs Educational Performance

Indicators

Definitions and Rules Version 6 – 2013.

1. Successful course completion is measured by the EFTS-weighted successful course completion rate (where EFTS means 'equivalent full-time student'). This is the successfully-completed courses each year, as a proportion of the total in enrolments, weighted by the EFTS value of the course.
2. Student retention is measured by the student completion (or continuation) rate. This is the number of re-enrolments or qualification completions at a TEO each year with the number of students at the TEO in the previous year.
3. Qualification completion is measured by the EFTS-weighted qualification completion rate. This is the number of qualifications completed at a TEO each year and (weighted by the EFTS value of each qualification), as a proportion of the total enrolments in qualifications (weighted by the EFTS value of the enrolments).
4. Participation indicators measure the proportion of students from different priority groups engaged in tertiary education. An EFTS is a unit for counting tertiary education student numbers. The basis of the EFTS system is that a student is taking a normal year's full-time study as 1.0 EFTS units or the equivalent of 120 credits on the New Zealand Qualifications Framework.

# THE PERFORMANCE OF NURSING EDUCATION PROVIDERS

## Responsive to Māori Nursing Students

### REFERENCES

1. Nursing Council of New Zealand. The New Zealand Nursing Workforce. A profile of Nurse Practitioners, Registered Nurses and Enrolled Nurses 2011. Wellington: Nursing Council of New Zealand, 2012.
2. Ministry of Education. Ka Hikitia - Managing for Success: The Māori Education Strategy 2008-2012. Wellington: Ministry of Education, 2012.
3. Human Rights Commission. Guidelines on Measures to Ensure Equality. Auckland Human Rights Commission, 2010.
4. Krause K, Hartley R, James R, McInnis C. The first year experience in Australian universities: Findings from a decade of national studies. Canberra: Australian Department of Education, Science and Training, 2005.
5. Yorke M, Longden B. The First Year Experience of Higher Education in the UK: Final Report (phase 2). York: Higher Education Academy, 2008.
6. Leach L, Zepke N. Student decision-making by prospective tertiary students: a review of existing New Zealand and overseas literature: report to the Ministry of Education. Wellington: Massey University. College of Education; 2005.
7. Wilson D, McKinney C, Rapata-Hanning M. Retention of indigenous nursing students in New Zealand: a cross-sectional survey. Contemporary Nurse. 2011;38(1-2):59-75.
8. Nikora L, Levy M, Henry J, Whangapirita L. An evaluation of Te Rau Puawai Workforce 100. Addressing the recruitment and retention of Māori students in tertiary education institutions: A Literature Review, technical report no. 2. Hamilton: University of Waikato, Māori and Psychology Research Unit, 2002.
9. Usher K, Lindsay D, Miller M, Miller A. Challenges faced by Indigenous nursing students and strategies that aided their progress in the course: a descriptive study. Contemporary Nurse. 2005;19(1-2):17-31.
10. Usher K, Miller M, Turale S, Goold S. Meeting the challenges of recruitment and retention of Indigenous people into nursing: outcomes of the Indigenous Nurse Education Working Group. Collegian. 2005;12(3):27-31.
11. Ratima M, Brown R, Garrett N, Wikaire E, Ngawati R, Aspin C, et al. Rauringa Raupa: Recruitment and Retention of Māori in the Health and Disability Workforce. AUT University: Taupua Waiora: Division of Public Health and Psychosocial Studies, Faculty of Health and Environmental Sciences, 2008.
12. Tierney W. Models of minority college-going and retention: cultural integrity versus cultural suicide. The Journal of Negro Education. 1999;68(1):80-91.
13. Tinto V, Russo P, Kadel S. Constructing educational communities in challenging circumstances. Community College Journal. 1994;64(4):26-30.
14. Greenwood J, Te Aika L. Hei Tauira: Teaching and Learning Success for Māori in Tertiary Settings. Ako Aotearoa, 2008.
15. Madjar I, McKinley E, Jenssen S, van der Merwe A. Towards University: Navigating NCEA Course Choices in Low-Mid Decile Schools. Auckland: The University of Auckland, 2009.
16. Airini, Curtis E, Townsend S, Rakena T, Brown D, Sauni P, et al. Teaching for student success: Promising Practices in University Teaching. Pacific-Asian Education. 2011;23(1):71-90.
17. Joyce-Erueti C, Poutu-Shaw R, Mitchell K. Ako Ako: A Progress report on a Peer-Mentoring Pilot Programme. New Plymouth: Department of Computing, Western Institute of Technology, 2004.
18. Prebble T, Hargreaves H, Leach L, Naidoo K, Suddaby G, Zepke N. Impact of student support services and academic development programmes on student outcomes in undergraduate tertiary study: A synthesis of the research. Wellington: Ministry of Education, 2004.
19. Anonson JM, Desjarlais J, Nixon J, Whiteman L, Bird A. Strategies to support recruitment and retention of First Nations youth in baccalaureate nursing programs in Saskatchewan, Canada. Journal of Transcultural Nursing. 2008;19(3):274-83.
20. DeLapp T, Hautman MA, Anderson MS. Recruitment and Retention of Alaska Natives into Nursing. Journal of Nursing Education. 2008;47(7):293-7.
21. Future Workforce DHBNZ. Report on Support for Māori and Pacific Nursing and Midwifery Undergraduate Students. Wellington, New Zealand: District Health Boards New Zealand, 2009.
22. Noone J. The diversity imperative: Strategies to address a diverse nursing workforce. Nursing Forum. 2008;43(3):133-43.
23. Tertiary Education Commission. Doing better for Māori in tertiary settings. Review of the literature. Wellington: Tertiary Education Commission, 2012.



